

Client

کارفرما

شرکت گهر پارک سیرجان

Project Name

عنوان پروژه

هتل چهار ستاره گهر پارک سیرجان

Location

موقعیت

سیرجان

Drawing Title

عنوان نقشه

پلان سوکت بویی اس طبقه سوم

Legend

Guide Chart

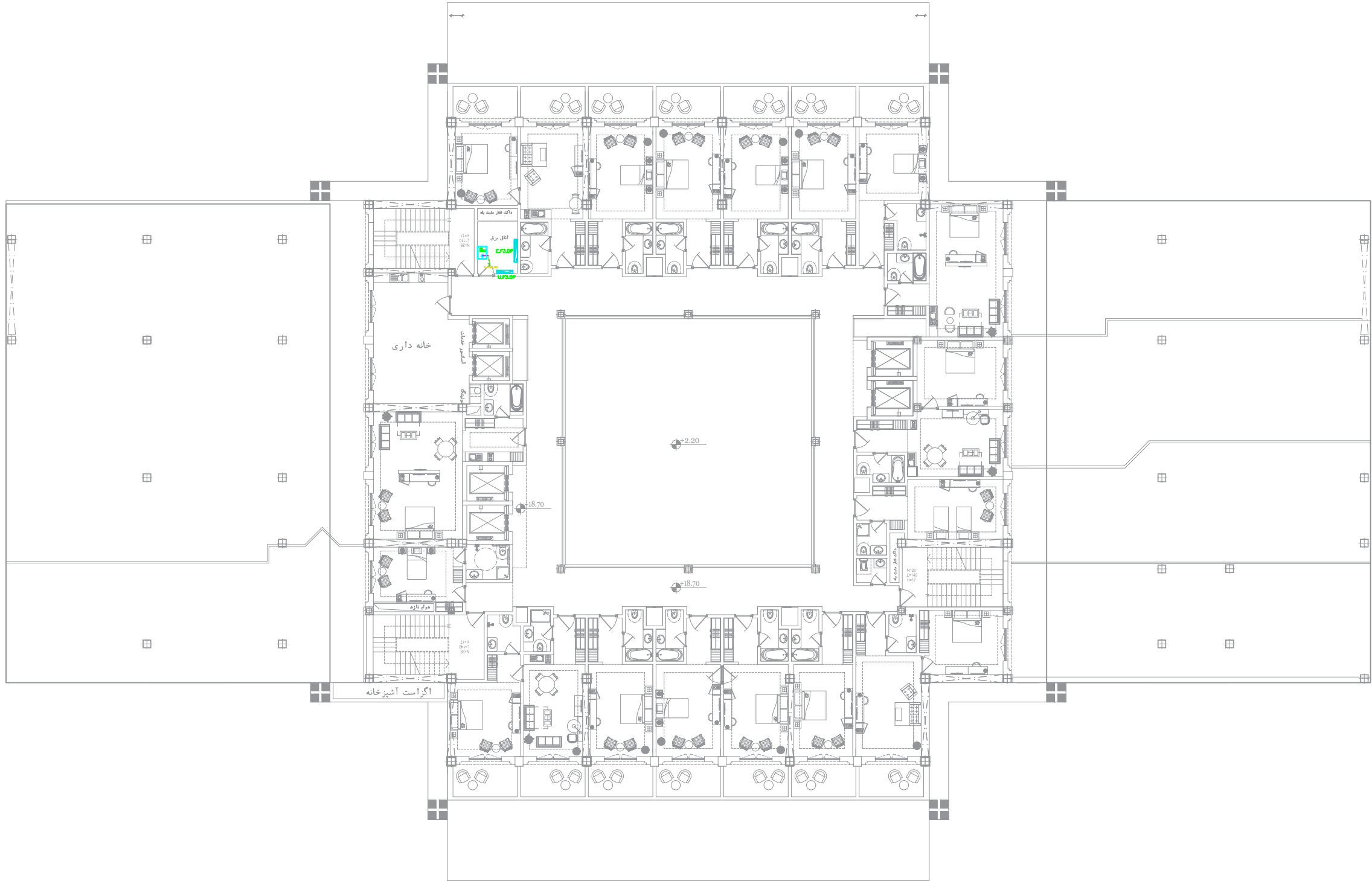
LEGEND

NAME	DESCRIPTION	KEY
	100mm diameter hole in floor	-
	150mm diameter hole in floor	-
	200mm diameter hole in floor	-
	250mm diameter hole in floor	-
	300mm diameter hole in floor	-
	350mm diameter hole in floor	-
	400mm diameter hole in floor	-
	450mm diameter hole in floor	-
	500mm diameter hole in floor	-
	600mm diameter hole in floor	-
	700mm diameter hole in floor	-
	800mm diameter hole in floor	-
	900mm diameter hole in floor	-
	1000mm diameter hole in floor	-
	1100mm diameter hole in floor	-
	1200mm diameter hole in floor	-
	1300mm diameter hole in floor	-
	1400mm diameter hole in floor	-
	1500mm diameter hole in floor	-
	1600mm diameter hole in floor	-
	1700mm diameter hole in floor	-
	1800mm diameter hole in floor	-
	1900mm diameter hole in floor	-
	2000mm diameter hole in floor	-
	2100mm diameter hole in floor	-
	2200mm diameter hole in floor	-
	2300mm diameter hole in floor	-
	2400mm diameter hole in floor	-
	2500mm diameter hole in floor	-
	2600mm diameter hole in floor	-
	2700mm diameter hole in floor	-
	2800mm diameter hole in floor	-
	2900mm diameter hole in floor	-
	3000mm diameter hole in floor	-
	3100mm diameter hole in floor	-
	3200mm diameter hole in floor	-
	3300mm diameter hole in floor	-
	3400mm diameter hole in floor	-
	3500mm diameter hole in floor	-
	3600mm diameter hole in floor	-
	3700mm diameter hole in floor	-
	3800mm diameter hole in floor	-
	3900mm diameter hole in floor	-
	4000mm diameter hole in floor	-
	4100mm diameter hole in floor	-
	4200mm diameter hole in floor	-
	4300mm diameter hole in floor	-
	4400mm diameter hole in floor	-
	4500mm diameter hole in floor	-
	4600mm diameter hole in floor	-
	4700mm diameter hole in floor	-
	4800mm diameter hole in floor	-
	4900mm diameter hole in floor	-
	5000mm diameter hole in floor	-
	5100mm diameter hole in floor	-
	5200mm diameter hole in floor	-
	5300mm diameter hole in floor	-
	5400mm diameter hole in floor	-
	5500mm diameter hole in floor	-
	5600mm diameter hole in floor	-
	5700mm diameter hole in floor	-
	5800mm diameter hole in floor	-
	5900mm diameter hole in floor	-
	6000mm diameter hole in floor	-
	6100mm diameter hole in floor	-
	6200mm diameter hole in floor	-
	6300mm diameter hole in floor	-
	6400mm diameter hole in floor	-
	6500mm diameter hole in floor	-
	6600mm diameter hole in floor	-
	6700mm diameter hole in floor	-
	6800mm diameter hole in floor	-
	6900mm diameter hole in floor	-
	7000mm diameter hole in floor	-
	7100mm diameter hole in floor	-
	7200mm diameter hole in floor	-
	7300mm diameter hole in floor	-
	7400mm diameter hole in floor	-
	7500mm diameter hole in floor	-
	7600mm diameter hole in floor	-
	7700mm diameter hole in floor	-
	7800mm diameter hole in floor	-
	7900mm diameter hole in floor	-
	8000mm diameter hole in floor	-
	8100mm diameter hole in floor	-
	8200mm diameter hole in floor	-
	8300mm diameter hole in floor	-
	8400mm diameter hole in floor	-
	8500mm diameter hole in floor	-
	8600mm diameter hole in floor	-
	8700mm diameter hole in floor	-
	8800mm diameter hole in floor	-
	8900mm diameter hole in floor	-
	9000mm diameter hole in floor	-
	9100mm diameter hole in floor	-
	9200mm diameter hole in floor	-
	9300mm diameter hole in floor	-
	9400mm diameter hole in floor	-
	9500mm diameter hole in floor	-
	9600mm diameter hole in floor	-
	9700mm diameter hole in floor	-
	9800mm diameter hole in floor	-
	9900mm diameter hole in floor	-
	10000mm diameter hole in floor	-

- پیمانکار موظف است که پیش از آغاز هر قسمت از کار تمام نقشه های مربوط به آن قسمت را با دقت کنترل نماید و در صورت مشاهده اتمام ، نواقص و یا عدم تطابق قبل از اجرا موارد را به مهندس مشاور متذکر نماید .

Drawing Info				
---	---	---	0A	REVISION
---	---	---	IFC	STATUS
---	---	---	1403/15/16	DATE
---	---	---	نه خانی	DESIGNED BY
---	---	---	---	CHECKED BY
---	---	---	پ. شریعی	DESIGNED BY
---	---	---	س. شریعی	CHECKED BY
---	---	---	---	APPROVED BY
---	---	---	آ.حاجی	COORDINATED BY
---	---	---	آ.حاجی	PROJECT MANAGER

SIZE	سایز	Group	DOCUMENT	SEQUENCE	REVISION
A3		گروه	نوع مدرک	شماره مدرک	ویرایش
SHEET	06	Mech	DWG	MSW/05	00
UNITS	واحد	مقیاس	PROJECT C.	PHASE	
m			کد پروژه	فاز	
			SIRJ	P2	



پلان طبقه سوم

- نکات اجرایی
- ۱-تمامی مدارات سوکت از کابل ۳×۲۰۵ NYMHY استفاده شود.

۲-لوله کشی مورد استفاده در مدارات سوکت از نوع لوله های پی وی سی خود اطفاء نمره ۱۶ میلیمتر در نظر گرفته شود.